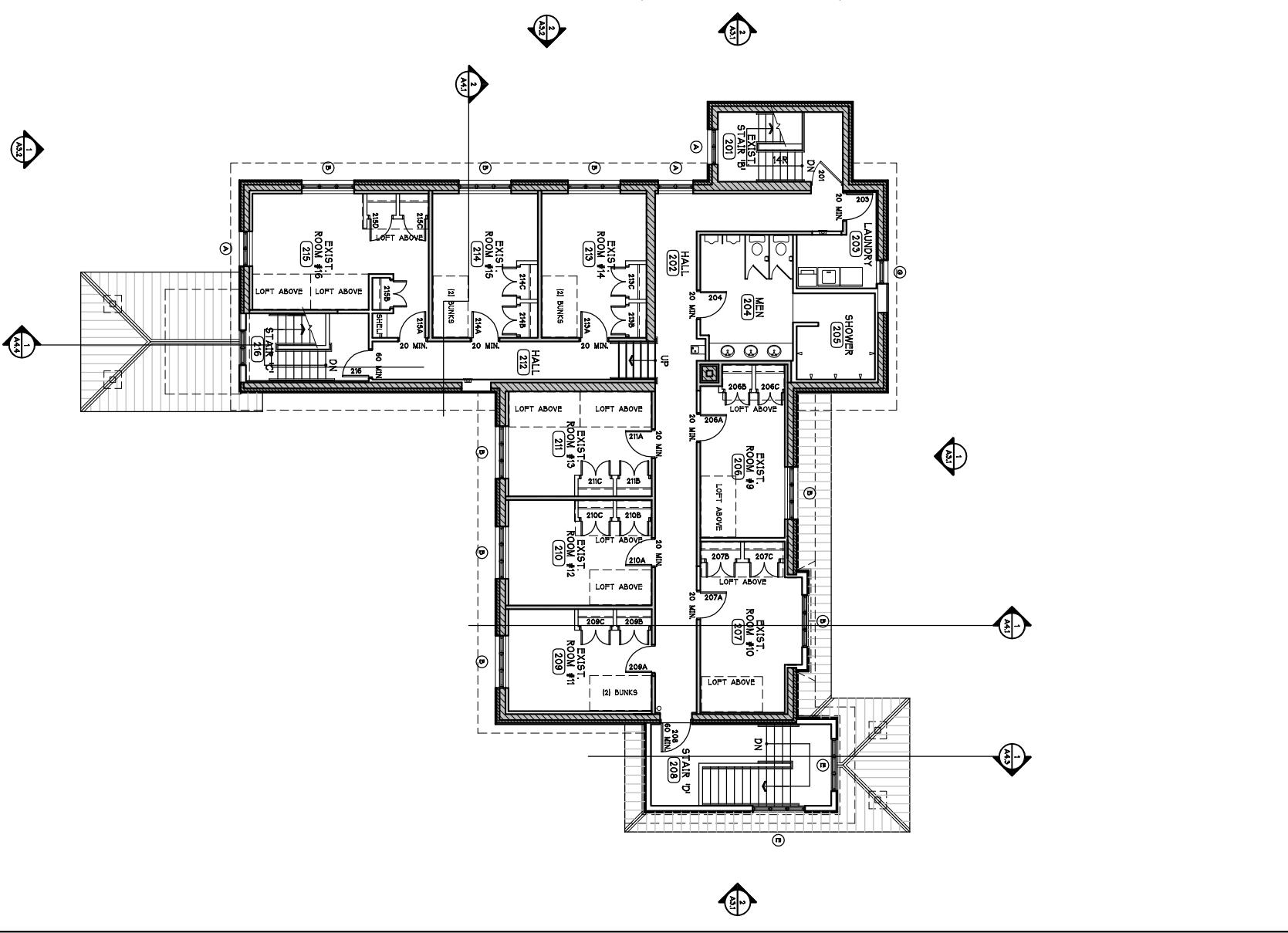
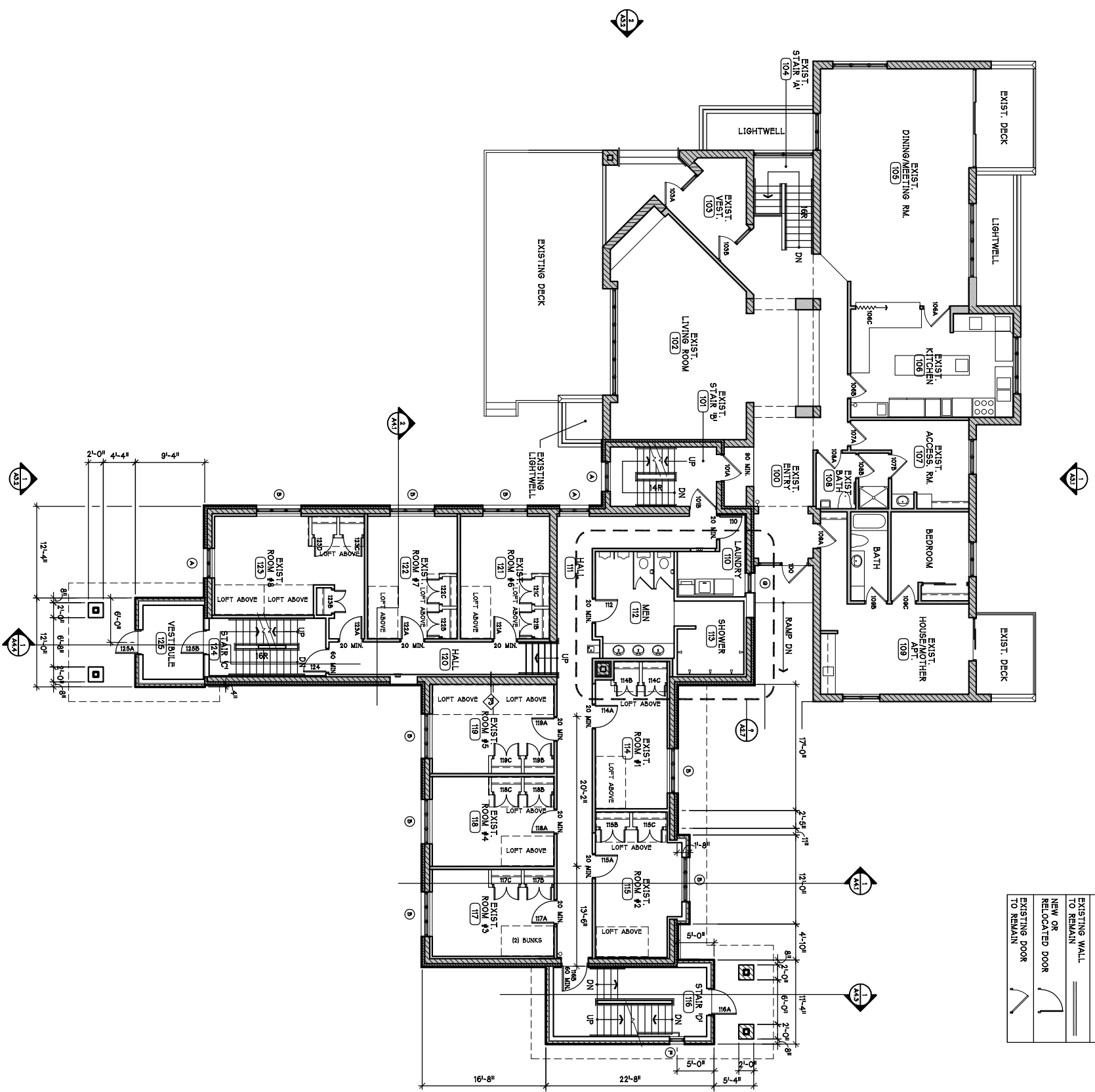


DRAWING KEY	
	NEW WALL
	EXISTING WALL TO REMAIN
	NEW OR RELOCATED DOOR
	EXISTING DOOR TO REMAIN



PRELIMINARY SET
 NOT FOR CONSTRUCTION

R · I · S · B · I · E
 ARCHITECTS

315 N. 2nd St., Ste. 204 River Falls, WI. 54882 Tel: 715.426.4988 Fax: 715.426.5366



ALPHA
GAMMA RHO
 FRATERNITY
 HOUSE
UWRF

RIVER FALLS, WI

PROJECT NO. 10-008

MAIN LEVEL &
 SECOND LEVEL
 FLOOR PLANS

A2.3

1 NOVEMBER 2010